
A Christian Basis for Education



Martin Dowson, Ph.D.

Principal, Institute of Christian Tertiary Education

June, 2001

TWO WAYS OF LOOKING AT EDUCATION

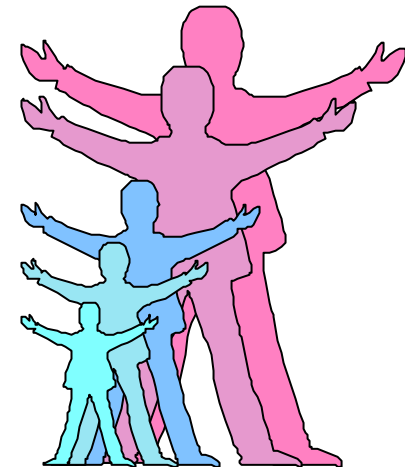


Secular Education

The teacher teaches
so that
the student learns to serve him/herself
so that
the student achieves personal success
so that
the student is, eventually, honored by the world.

Christian Education

(from Ephesians 4)
The teacher teaches
so that
the student learns to serve others
so that
we are all united in the faith and knowledge of Christ
so that
we will all, eventually, achieve maturity in Christ.



THE PURPOSE OF EDUCATION

Secular Education	Christian Education	Some Biblical References
Seeks to develop students who know (gk. <i>gnosis</i>) about the world	Seeks to develop students who know (heb. <i>yadeh</i>) Christ	Phil. 3:8-10 (I want to know Christ...) Col. 2:2-3 (I struggle that you may know Christ in whom are hidden all the treasures of wisdom and knowledge.)
Education for knowledge	Education for discipleship	Matt. 28:19 (Make disciples...teach them to obey.)
Education to serve self	Education to serve Christ and others	Eph. 4:11-12 (God appoints teachers to prepare God’s people for works of service.) Gal. 5:13-14 (..serve one another in love.)

PEDAGOGY APPROPRIATE TO EDUCATION

Secular Education	Christian Education	Some Biblical References
Focuses on teaching content	Focuses on developing relationships (unity)	Col. 2:2 (...be encouraged in heart and united in love so that you may know Christ.) Rom. 15:5 (...be united so that you can glorify God.)
Classroom is primarily a thinking space	Classroom is primarily a relational space	Luke 19:45 – 21:38 (Jesus teaching in the temple in a relational, responsive, and ‘opportunistic’ way.)
Teachers or students are the pedagogical center	Christ is the pedagogical center	1 Cor. 2:1-5 (Paul explains that he does not draw attention to himself as a teacher but to Christ as saviour).

CURRICULUM, PLANNING AND PROGRAMMING

Secular Education	Christian Education	Some Biblical References
Focuses on the cognitive and behavioral needs of children	Focuses on the spiritual and emotional needs of children as well as their cognitive and behavioural needs	1 Thes. 5:23 (I pray your spirit, soul and body may be kept blameless.) Eph. 6:4 (...don't exasperate [emotion need] your children, but train [behavioral need] and instruct [cognitive need] them in the Lord [spiritual need].)
World-views are kept implicit	World-views are made explicit	Col. 2:8 (Don't be taken captive through hollow and deceptive philosophy.)
Separates Biblical concepts from the curriculum	Integrates Biblical concepts with within the curriculum	Col. 1:15-20 (especially v17 - in Him <i>all things</i> hold together - and v19 - God reconciling <i>all things</i> to Himself through Christ.)

DISCIPLINE

Secular Education	Christian Education	Some Biblical References
Is to develop social compliance	Is to develop righteousness	Heb. 12:4-11 (God’s discipline produces a “harvest of righteousness”.)
Is to build submission (willing or otherwise) to secular authority	Is to build willing submission to Christ’s authority	Col. 1:28 (We teach and admonish with wisdom in order to present people perfect in Christ.)



TEACHER'S PERSONAL LIVES

Secular Education	Christian Education	Some Biblical References
<p>Are irrelevant to the teaching enterprise</p> <p style="text-align: center;"><i>and so...</i></p> <p>Are largely unknown by the students</p>	<p>Are central to the teaching enterprise</p> <p style="text-align: center;"><i>and so...</i></p> <p>Are deliberately made known to the students</p>	<p>1 Thes. 2:1-12 (...we lived among you for your sake.)</p> <p>1 Thes. 2:8 (We shared not only the gospel with you but our very lives because we love you so much.)</p>



THE SCHOOL

Secular Education	Christian Education	Some Biblical References
<p>Is an organisation, institution, or bureaucracy which exists to be served by its members</p>	<p>Is a organism, community, family, or body which exists to serve Christ as it serves its members.</p>	<p>1 Pet. 2:9-10 cf. Eph. 4., etc. (the people of God are always described in corporate terms eg. as ‘nation’, ‘priesthood’, ‘body’, ‘family’ (God’s children), the ‘church’, ‘flock’, etc.)</p>
<p>Accepts and propagates societal values</p>	<p>Critiques and transforms societal values</p>	<p>Phil. 2:12-16 (shine like stars/work out your salvation/hold out the word of life/ in a crooked and depraved generation.)</p>

